

HADLEY

♂ ♀ Unisex



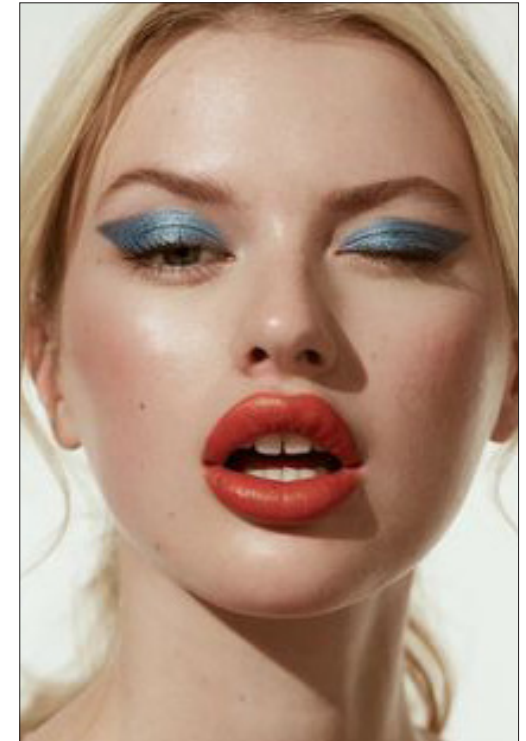
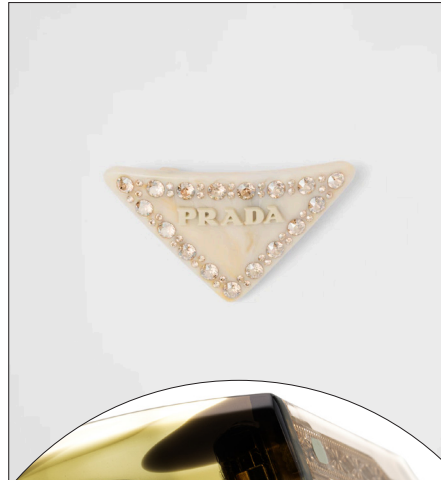
- Size: 47 x 23
- Shape: Panto
- Material: Acetate

This year is all about making a statement and Hadley knows it. It has a bulky front, a new wire core design and comes in trendy colors such as a olive green. Hadley simply refuses to be unseen and is the fashion statement everyone needs.



VALENTINA

♀ Female



- Size: 50 x 18
- Shape: Cat-eye
- Material: Acetate

Valentina celebrates femininity. The grand cat eye is refined by beautiful details. With references to both old school Hollywood glamour and contemporary streetstyle, Valentina is here to stay.

ARCHER

♂ Male



- Size: 51 x 20
- Shape: Square
- Material: Acetate

Archer is a fashionable choice for everyone who loves to adorn themselves. The color of the frames spans from statement green to icy transparency offering diverse yet disputable trendiness. Don't ignore it's many features like the 6mm front, a new and cool diamond-inspired temple design and the dice icons on the end tips.

WESTON

♂ Male

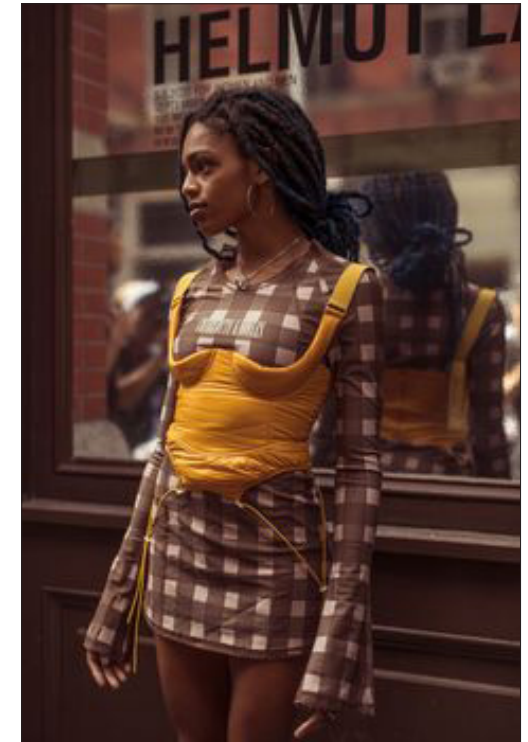
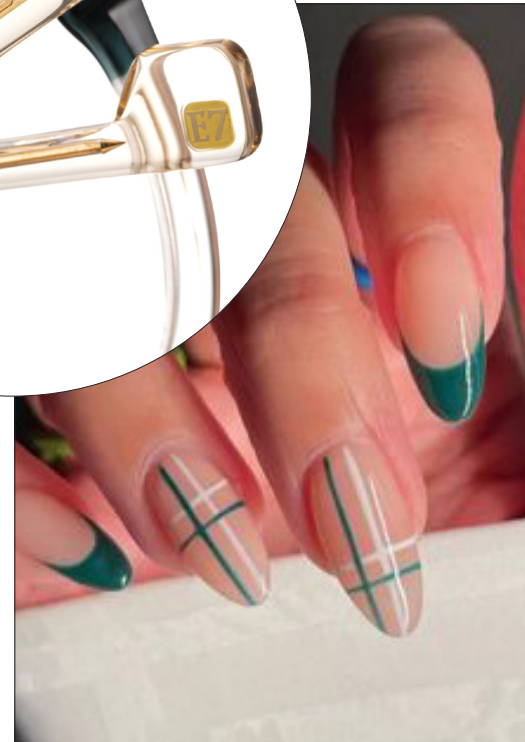


- Size: 47 x 20
- Shape: Panto
- Material: Acetate

Weston is American design with a global appeal. It's modern panto shape promises a refined look and is matched perfectly with classic jeans. Weston comes in a variety of timeless color combinations.

MAGNOLIA

♀ Female



- Size: 49 x 21
- Shape: Butterfly
- Material: Acetate

Magnolia is not playing around. With a big and bold butterfly shape it demands attention. Magnolia blossoms in a trendy green tortoise and a set of two-tone colors that fits every personal style and mood. The drop down nose bridge and interesting new temple design has this frame going from old-school to high fashion.

ELOIZE

♀ Female



- Size: 46 x 20
- Shape: Cat eye
- Material: Acetate

Eloize is the essence of effortless cool. It serves a modest cat eye shape with a retro feel. Refined details on the wire core makes it extra interesting for the eye.

SANTIAGO

♂ ♀ Unisex



- Size: 49 x 26
- Shape: Round
- Material: Acetate

Santiago refuses to blend in. With its round shape, bulky appearance and detailed wire core it's not going to go unnoticed. The front is decorated with the E7-superman logo pins and soft facet cuttings. Opt in a bold black, a bright green and two variations of blue.



COLTON

♂ Male



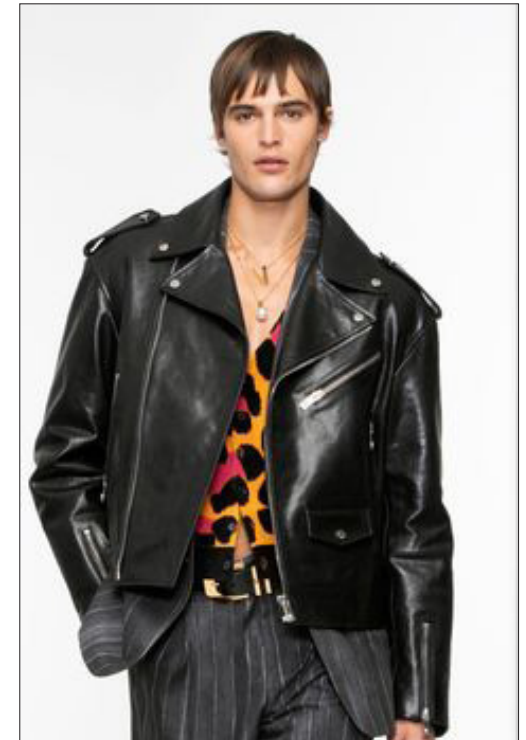
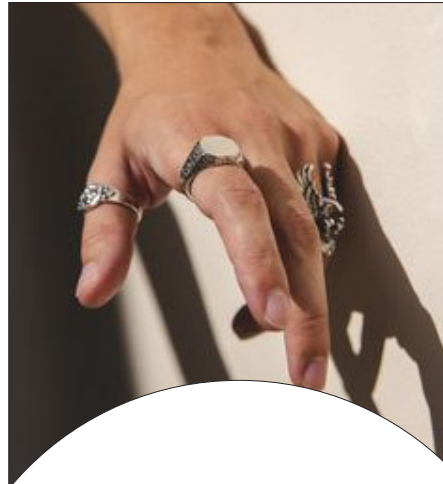
- Size: 50 x 19
- Shape: Panto
- Material: Acetate-combi

Colton is a retro, bold statement piece inspired by the late John F. Kennedy. With the flaunting engravings showing through the acetate on the skull temples, this frame wants to make its mark and demands to be seen. A perfect mixture of trend and timelessness.



SKIRBALL

♂ Male



- Size: 57 x 21
- Shape: Panto
- Material: Acetate

Skirball is a cool, contemporary statement with an old school twist. Finding inspiration in the classic archives, Skirball gives the aviator sunglasses a modern makeover by adding a 6 mm acetate and skull temples. Big, bulky and perfect for this season.

DECKER

♂ ♀ Unisex



DECKER-0101



DECKER-0854



DECKER-1048



- Size: 48 x 26
- Shape: Panton
- Material: Acetate

Decker serves you classic chic - a true rock'n'roll wonder. The big and bulky frame makes a statement with its round aviator look. Opt in bold black, vintage tortoise or a transparent version with a tortoise detail on the bridge.



RUNYON

♂ Male



RUNYON-0127



RUNYON-0858

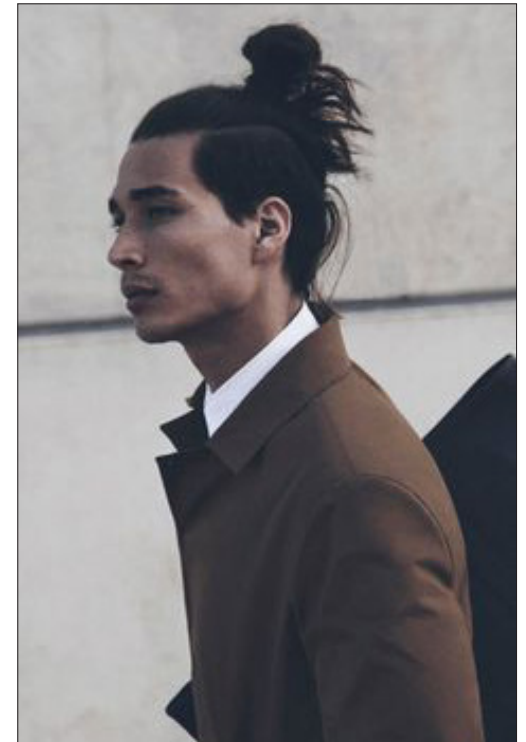


RUNYON-1049



- Size: 54 x 21
- Shape: Square
- Material: Acetate

Runyon is outstanding and stylish. Look at the opposite temple design and the transparent lamination detail on the bridge. It's a beautiful piece that pleases everyone's eye. Fit for the streets as well as the catwalk. Opt in three different colors that makes the wearer stand out.



TARZANA

♂ ♀ Unisex



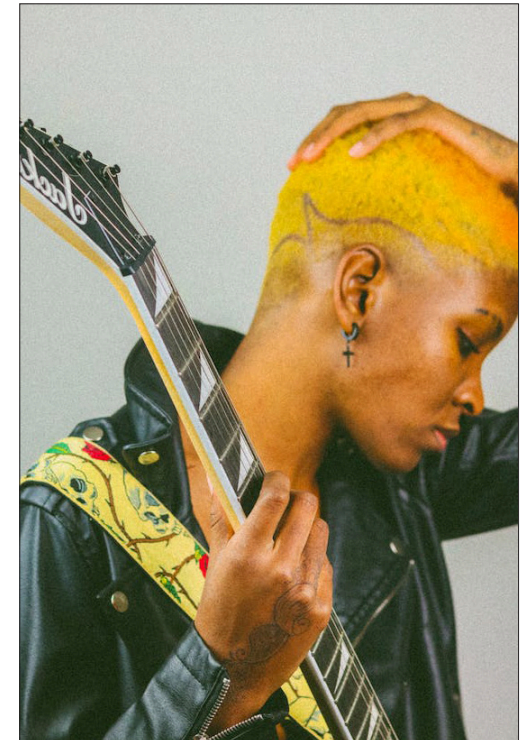
TARZANA-0223



TARZANA-0840



TARZANA-1020



- Size: 48 x 24
- Shape: Panto
- Material: Acetate

Go big or go home. With its bulky 6mm front, detailed E7-Superman pins and intriguing colors Tarzana is hard to avoid. And why should you?

RAVENA

♀ Female



RAVENA-0128



RAVENA-0535



RAVENA-1051

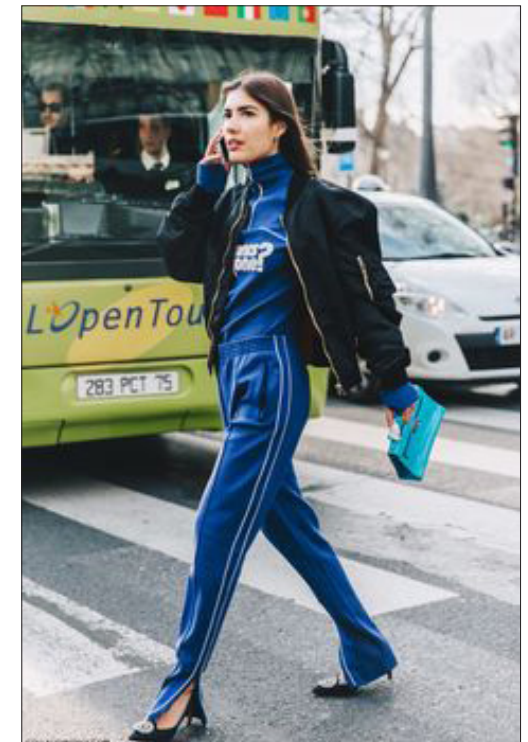
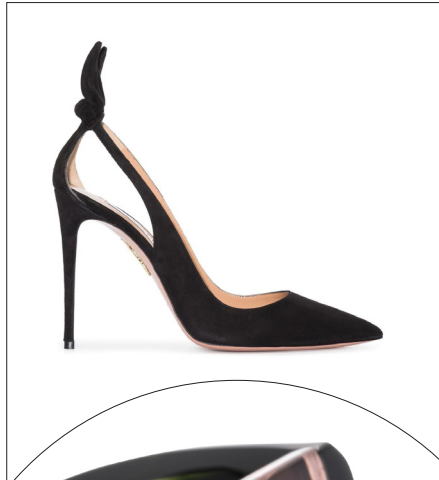


- Size: 51 x 19
- Shape: Square
- Material: Acetate

Ravena is inspired by the beauty icon Brigitte Bardot. The shape is square, but there is nothing conventional about this frame. More is not always more, but in this case it sure is. Opt in bold black, blue or crystal with a green detail.

SYCAMORE

♀ Female



- Size: 51 x 24
- Shape: Cateye
- Material: Acetate

Sycamore brings you fashion every week. It's big for a reason and it can't be silenced. Sycamore is a 6mm heavy acetate front complimented with soft facet cuttings. Chose between three beautiful colors and compelling patterns.

ELEANOR

♀ Female



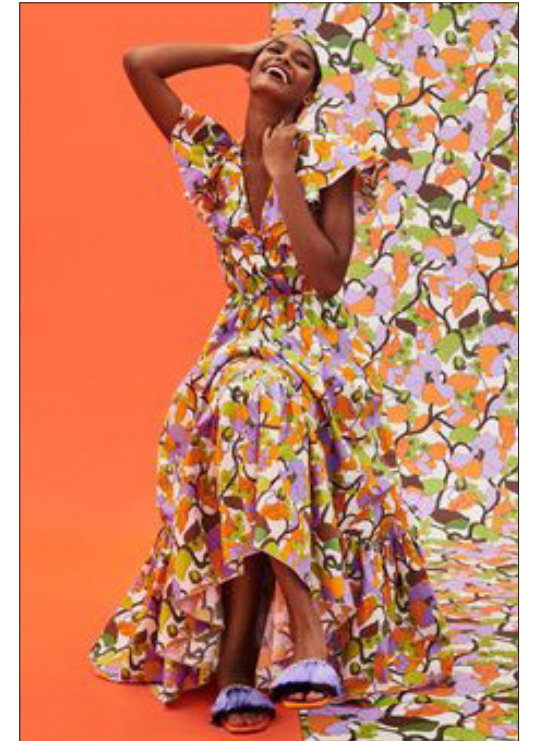
ELEANOR-0609



ELEANOR-0842



ELEANOR-1053

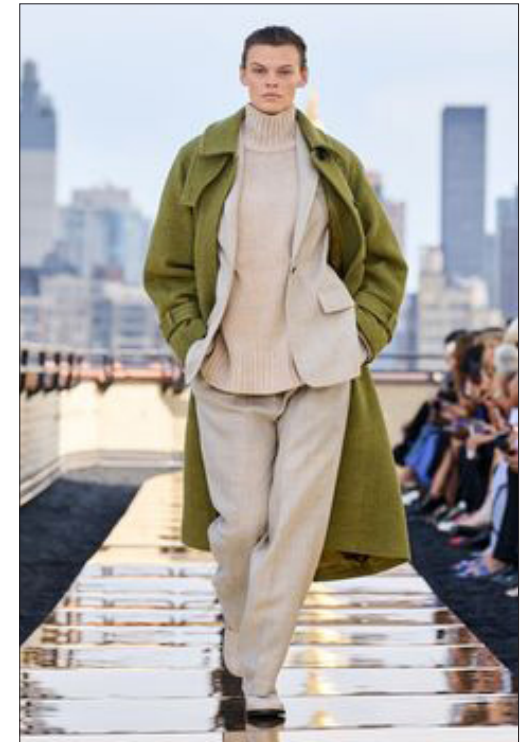


- Size: 53 x 21
- Shape: Butterfly
- Material: Acetate

Eleanor embodies femininity. It's leaving a larger-than-life impression wherever it goes. The butterfly shape is complimented by tidy details on the wire core. Eleanor makes everyone stop and stare. Opt in a full purple color for extra attention.

SERRANO

♂ ♀ Unisex



- Size: 48 x 25
- Shape: Panto
- Material: Acetate

Serrano is pure artwork. It's craftsmanship, design and playfulness combined. The bulky 6mm front is softened with facet cuttings. Coming in three exciting variations of patterns and sensational color combinations, Serrano makes it easy for everyone to stand out.